

MACHINE MODEL	Rotating telescopic handler	RTH 5.30 S			
	Maximum lifting capacity	4.999 kg (center of gravity 500 mm)			
	Maximum lifting height	29,90 m			
ENGINE - MERCEDES	Type	Mercedes OM 934 LA Stage IV	Mercedes OM 924 LA Stage 3A		
	Rated power	150 kW - 203 HP at 2.200 rpm	145 kW - 196 HP at 2.200 rpm		
	Maximum torque	800 Nm at 1.200-1.600 rpm	705 Nm at 1.200-1.600 rpm		
	Displacement	5,13 l	4,8 l		
	Cylinders	4 in line	4 in line		
	Fuel	Diesel direct injection turbocharged			
	Cooling system	Water — intercooler			
ENGINE - JCB	Type	JCB ECOMAX stage IV i	JCB DIESELMAX stage 3A		
	Rated power	129 kW - 175 HP to 2.050 rpm	120 kW - 162 HP to 2.200 rpm		
	Maximum torque	690 to 1.500 rpm	657 to 1.500		
	Displacement	4.765	4.399		
	Cylinders	4	4		
	Fuel	Diesel direct injection turbocharged	Diesel direct injection turbocharged		
Cooling system	Water — intercooler	Water — intercooler			
TRANSMISSION	Type	Hydrostatic			
	Model	Bosch — Rexroth			
	Maximum pressure	500 bar			
	Displacements	Variable displacement pump electronically controlled. Variable displacement motor.			
AXLES AND BRAKES	Gear box	2 speeds forward-reverse			
	Type	Axles with epicyclic reduction gear			
	Rear axle	Oscillating and steering with hydraulic locking			
	Front axle	Oscillating and steering with automatic levelling +/- 10°			
	Service brake	Hydraulically activated, oil-immersed multi-disc type on each axle			
	Parking brake	Hydraulic with negative action			
	Tyres dimensions	445/65 R 22,5			
PERFORMANCE	Max. travel speed	40 km/h			
	Drawbar pull	80 kN			
	Gradeability	40%			
	Turning radius (end of forks)	6.570 mm			
WEIGHTS	Total unladen	21.830 kg			
	Front axle unladen (boom retracted and lowered)	10.830 kg			
	Rear axle unladen (boom retracted and lowered)	11.000 kg			
TANKS		Mercedes stage IV	Mercedes stage 3A	JCB stage IV i	JCB stage 3A
	Fuel tank	180 l	180 l	200 l	200 l
	AdBlue	40 l	n.a.	n.a.	n.a.
	Hydraulic oil tank	220 l	220 l	210 l	210 l
	Engine oil tank	20,5 l	20,5 l	14 l	14 l
Cooling liquid	36 l	36 l	24 l	24 l	
HYDRAULIC CIRCUIT	Max. operating system pressure	350 bar			
	Circuit type	Load sensing			
	Service pump	Bosch Rexroth — Variable displacement			
	Controls for boom and turret movements	Danfoss — Electroproportional valve SIL 2			
	Controls for stabilizers	Bosch Rexroth — Electro-hydraulics controls			
	Movements control	2 joystick Danfoss with two shafts with dead man safety device - Management with CAN bus technology			
CONFORMITY TO STANDARDS	EN 13849: concerning the safety of all controls of the machine EN 13000: concerning the standard of hydraulic cranes EN 280: concerning the standard of aerial platforms FOPS/ROPS 97/68/CE: concerning engine emissions standards				

The data in this brochure are informative and subject to change without notice

stamp: www.ippellaghi.it/1660060



tracce.com

REV06

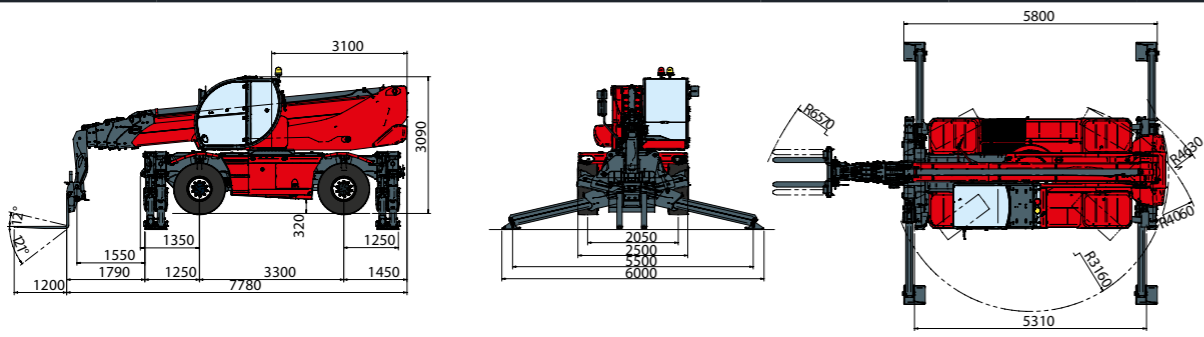
Maximum lifting height: 29,90 m
Maximum reach: 25,85 m
Electronically controlled hydrostatic transmission
Automatic levelling device
Scissors stabilizers

RTH5.30S

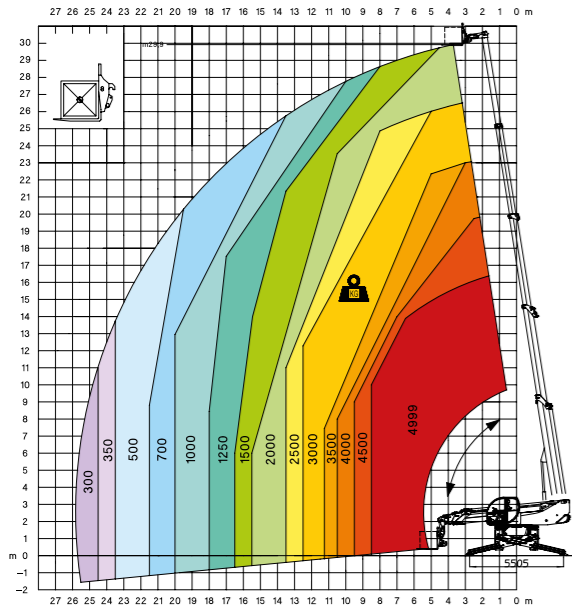
Magni Telescopic Handlers srl

Via Magellano, 22 - 41013 Castelfranco Emilia, Modena, Italia - Tel: +39 059 8630811 - Fax: +39 059 8638012

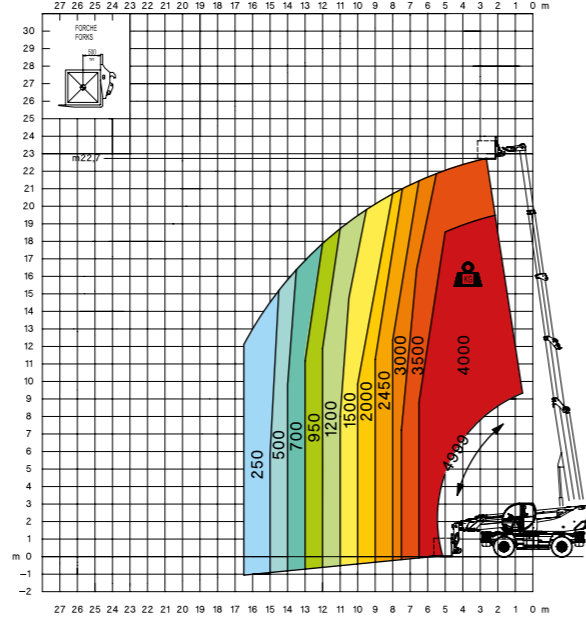
commerciale@magnith.com - www.magnith.com



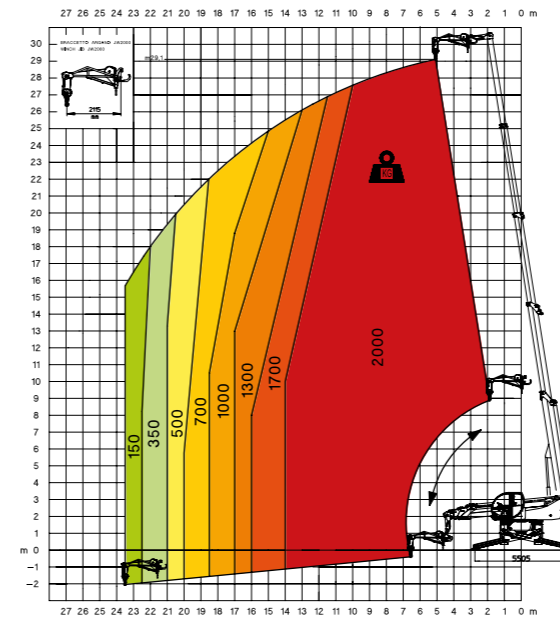
360° fully extended stabilizers load chart with forks



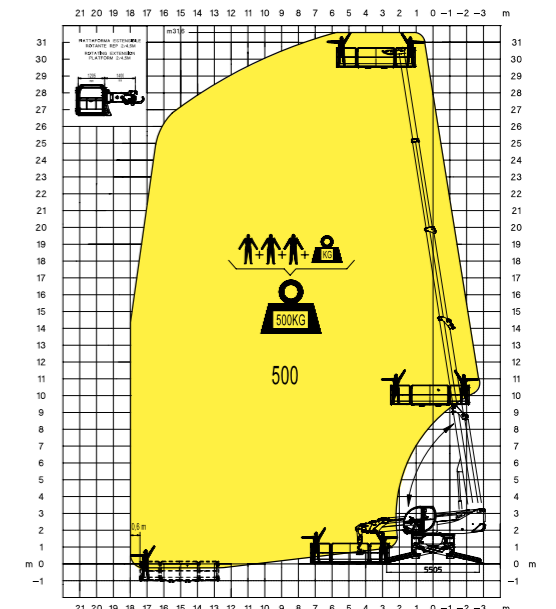
Frontal position load chart on tyres with forks



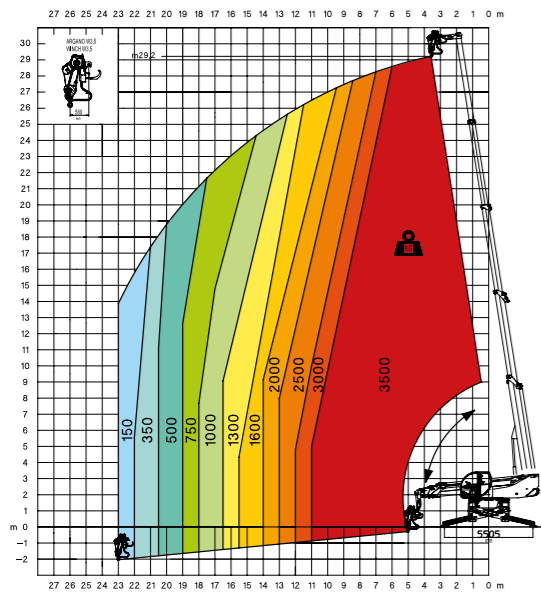
JW 2000
Jib winch 2.000 kg



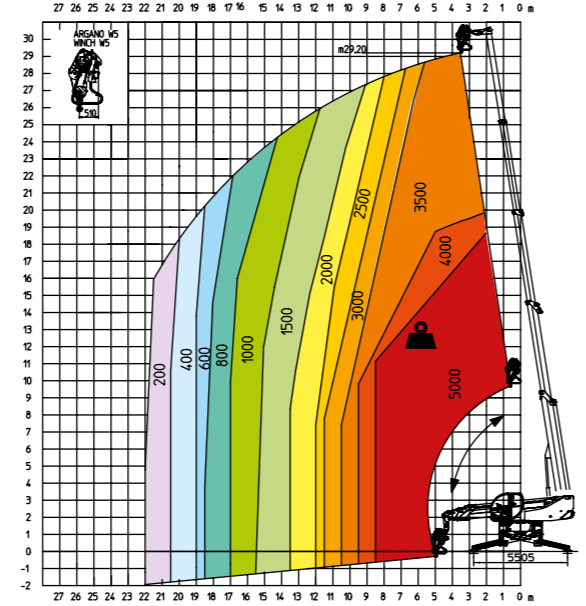
REP 2-4,5
Rotating extendable men platform 500 kg



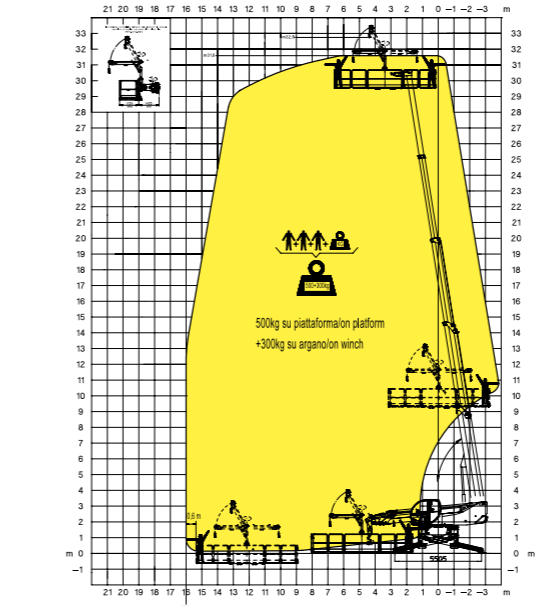
W 3,5
Winch 3,5 ton



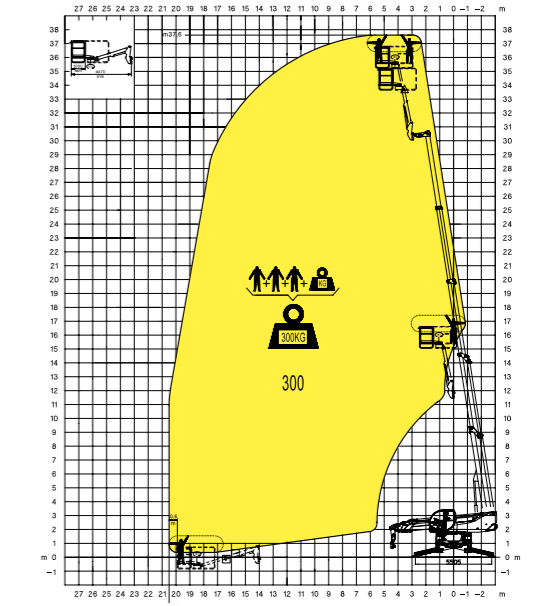
W 5
Winch 5 ton



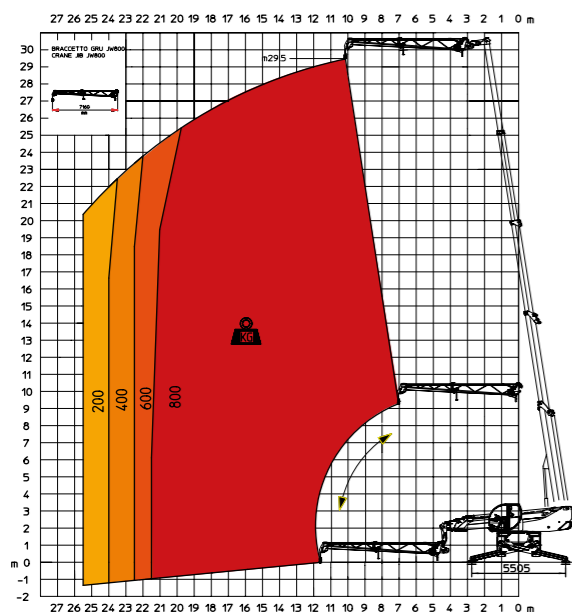
REP 2-6,5 W0,3
Platform 6,5m 500 kg with winch 300 kg



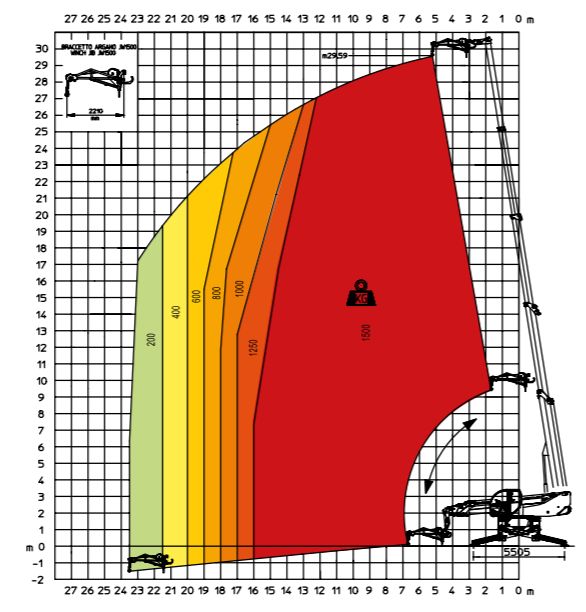
TP
Telescopic Platform TP



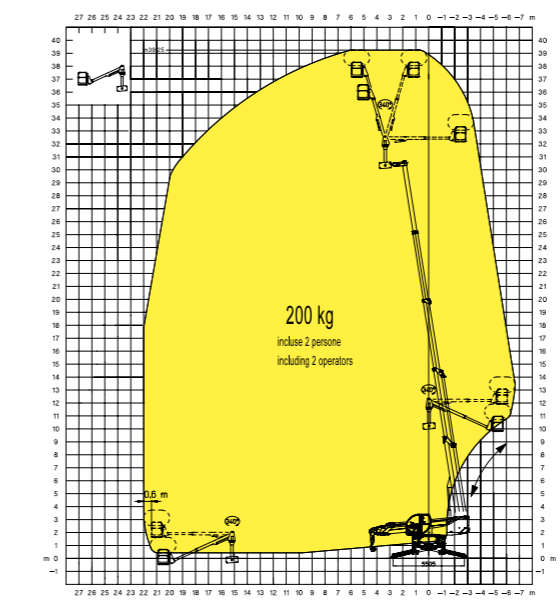
JW 800
Jib winch 800 kg



JW 1500
Jib winch 1.500 kg



TP O-U
Telescopic pivoting men platform over-under with 340° rotation



TP O-U
Telescopic pivoting men platform over-under with 340° rotation

