

This document gives a complete list of technical data with some detailed explanations of the main systems, subsystems and performance of our generators, in order to support local sales documentation, tenders or even technical doubts.

While every effort has been made to ensure that the information in this manual is correct Atlas Copco does not assume responsibility for possible errors. Atlas Copco reserves the right to make changes without prior notice.



Standard Model Scope

Applying insights gained from industrial customers, rental companies, public utilities and other end users QAS generators are designed to withstand the most demanding on-site conditions and environments.

Considering their impressive performance at full capacity, the QAS line of generators includes excellent features for noise reduction and environmental protection.

QAS generators are purpose built for quick, easy and safe transport and on-site handling. Built to last, a QAS generator will provide years of dependable service for your electrical power generation needs. All members of the widely appreciated QAS family are intelligent multi-task units managing to power a wide range of electrical equipment in different applications.

Their superior component configuration offers a wide range of control modules, electrical settings and mechanical options, in order to guarantee superior quality at efficient operating costs.

Conceived for 100% prime power operation in the most severe outdoor conditions, ready to work in sensitive areas, QAS generators are designed and configured for safe operation with minimal downtime under any circumstance.

Features

- Carefully selected components, accurately developed and tested configuration
- Superior standard configuration and extensive option list
- 500 hours service interval and superior accessibility to all service points
- Compact and safe concept and sturdy design
- Designed and built to last

Benefits

- Accurate and stable power regardless of the conditions
- Ability to power a wide range of applications
- Service efficiency: increased up-time
- Increased transport efficiency
- Superior resale value / longer life time

Manufacturing and Environmental Standards

The QAS range is manufactured following stringent ISO 9001 regulations, and by a fully implemented Environmental Management System fulfilling ISO 14001 requirements.

Attention has been given to ensure minimum negative impact to the environment. The QAS range complies with the latest noise emission directives.

Declaration of Conformity

Our QAS EC falls under the provisions of the article 12.2 of the EC Directive 2005/42/EC on the approximation of the laws of the Member States relating to machinery, is in conformity with, the relevant Essential Health and Safety Requirements of this directive:

MACHINERY SAFETY (2006/42/EC): EN ISO 12100-1, EN ISO 12100-2, UNE EN 12601

ELECTROMAGNETIC COMPATIBILITY (2004/108/EC): EN 61000-6-5, EN 61000-6-4

LOW VOLTAGE EQUIPMENT (2006/95/EC): EN 60034, EN60204-1, EN 60439

OUTDOOR NOISE EMISSION (2000/14/EC): ISO 3744

ISO 8528: QAS generators are design to comply with ISO 8528 regulation

1. Performance Data

Generator		QAS 60 Pd S3A	
Rated speed	rpm	1500	1800
Rated power factor (lagging)		0.8	0.8
Rated Prime Power, PRP	kVA	60	67.5
	kW	48	54.0
Limited Time Power, ESP (Stand-by)	kVA	66	74.3
	kW	52.8	59.4
Continuous Operation Power, COP (Continuous)	kVA	48	54.0
	kW	38.4	43.2
Rated voltage (3ph. line to line)	V	400	480
Rated voltage (1ph. line to neutral)	V	230	277
Rated current 3ph. (PRP)	A	86.6	81.2
Rated current 3ph. (ESP)	A	95.3	89.3
Maximum sound power level (LWA) complies with 2000/14/EC	dB(A)	89	93
Maximum sound pressure level (LPA) at 7 m	dB(A)	61	65
Coupling engine/alternator			Direct
Capacity fuel tank (total)	l		150
Fuel tank specifications			Plastic
Fuel Autonomy at full load (Considering full capacity)	h	10.7	8.86
Single step load acceptance (within G2, acc. ISO 8528-5:1993)	%		85
Frequency drop (lower than % isochronous)	%		≤0.05
Maxim oil consumption 100% load	l/h	0.021	0.024

Derating Table (%)

	0°C	5 °C	10 °C	15 °C	20 °C	25 °C	30 °C	35 °C	40 °C	45 °C	50 °C
0 m	100	100	100	100	100	100	100	100	100	95	90
500 m	100	100	100	100	100	95	95	95	95	90	85
1000 m	100	100	100	100	100	95	95	95	95	90	85
1500 m	100	100	100	95	95	95	95	95	90	85	80
2000 m	100	100	95	95	95	95	95	95	90	80	75
2500 m	95	95	95	95	95	90	90	90	90	NA	NA
3000 m	95	95	90	90	90	90	90	90	85	NA	NA
3500 m	90	90	90	90	90	85	85	NA	NA	NA	NA
4000 m	90	85	85	85	85	85	85	NA	NA	NA	NA

Limitations

Limitations		QAS 60 Pd S3A	
Maximum ambient temperature	°C		50
Altitude capability	m		4000
Relative air humidity maximum	%		85
Minimum running temperature	°C		-15
Minimum running temperature, with coldstart equipment and opened breather*	°C		-25

* on high humidity regions freezing may occur on the *breather pipes*

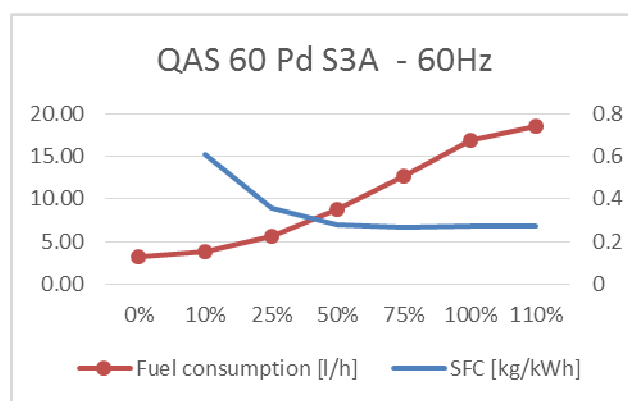
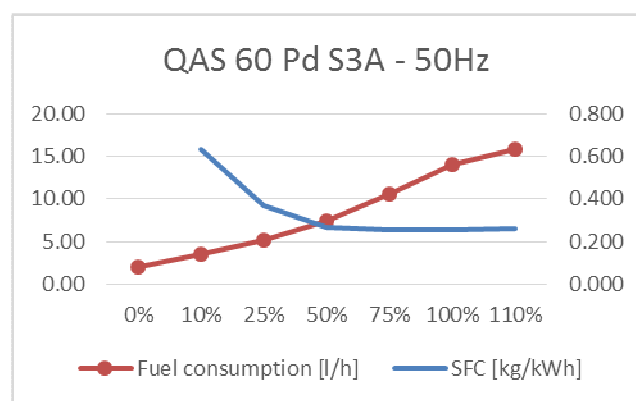
Application Data

Application Data		QAS 60 Pd S3A	
Mode of operation			PRP
Max. Inclination			+/- 25°
Operation			Single / parallel
Start-up and control mode			manual / auto
Climatic exposure			open air

QAS 60 Pd S3A

	rpm	1500	1800
Fuel Consumption at*:			
0% Load	l/h	2.05	3.16
10% Load	l/h	3.53	3.81
25% Load	l/h	5.12	5.58
50% Load	l/h	7.44	8.74
75% Load	l/h	10.60	12.65
100% Load	l/h	14.05	16.93
110% Load	l/h	15.81	18.60
Specific Fuel Consumption at:			
0% Load	kg/kWh	NA	NA
10% Load	kg/kWh	0.633	0.607
25% Load	kg/kWh	0.367	0.356
50% Load	kg/kWh	0.267	0.279
75% Load	kg/kWh	0.253	0.269
100% Load	kg/kWh	0.252	0.270
110% Load	kg/kWh	0.258	0.269

*Diesel fuel type No. 2 diesel or a fuel corresponding to ASTM D2. Density: 0,86 kg/l

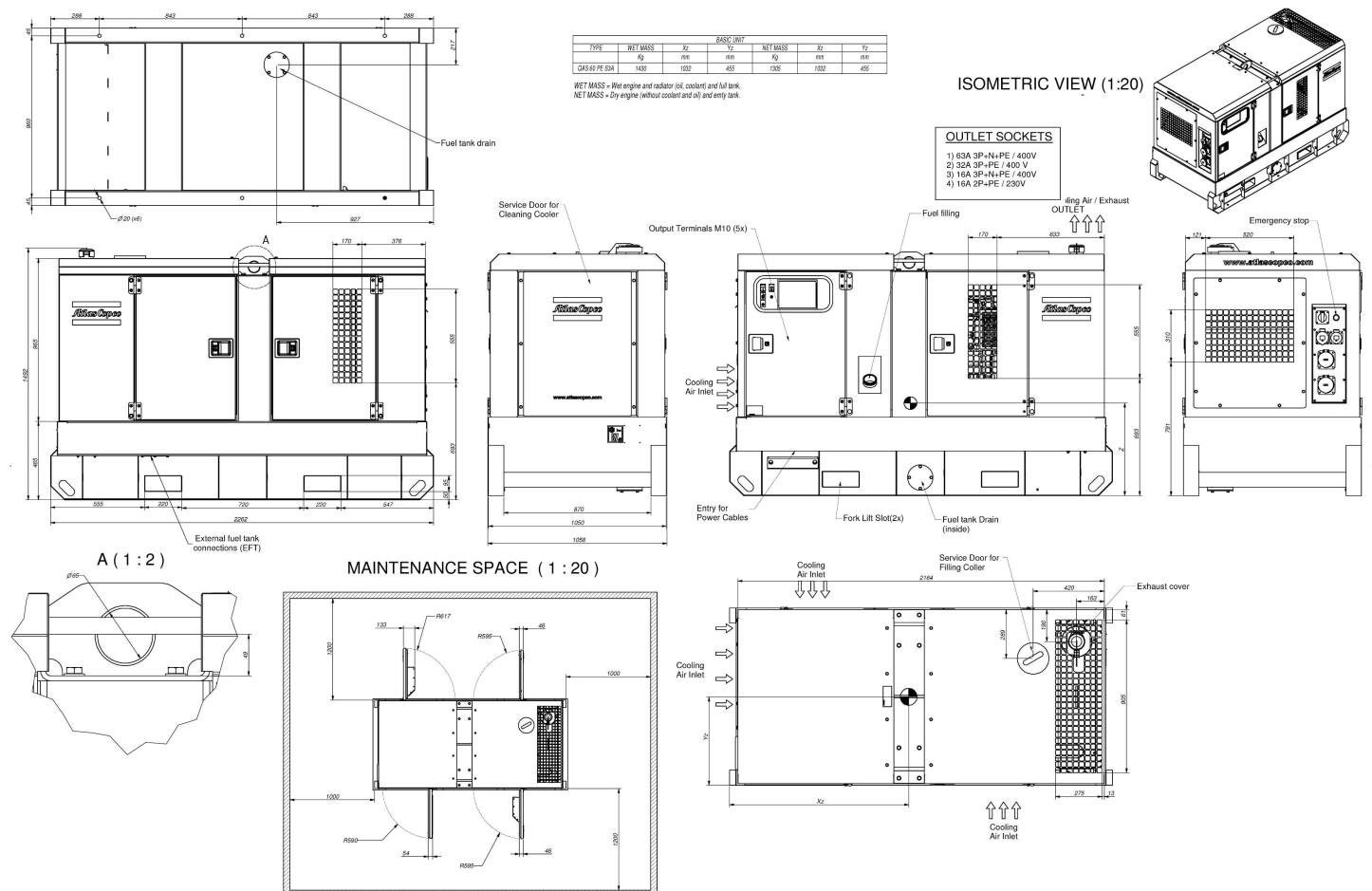


(Reference conditions at 25°C Air Inlet Temperature, 60% Relative Humidity, 1bar Absolute inlet pressure, for different conditions or limitations contact Atlas Copco technical support).

2. Box

QAS 60 Pd S3A			
	rpm	1500	1800
Dimensions (L x W x H)	m	2,26 x 1,05 x 1,43	
Weight			
Net mass	Kg	1305	
Wet mass	Kg	1430	
Capacity of spillage free frame	l	181.5	
Dimensions Long autonomy Fuel tank			
Weight			
Net mass	Kg	1368	
Wet mass	Kg	1624	
Foam silencer			
Thickness	mm	50	
Temperature	°C	Min -30 Max 120	

Our canopies are made from galvanized steel and painted with powder coating paint. To improve the protection in the most exposed parts as frame and lifting beam, it is also primed with a special paint before coating.



3. Engine

QAS 60 Pd S3A			
	rpm	1500	1800
General			
Manufacturer		Perkins	
Model		1104D-44TG3 / TG2	1104D-44TG2
Standard		ISO 3046 / ISO 8528-2	
Number of cylinders	u.	4	
Configuration		4 vertical in line	
Aspiration		Turbocharged	
Speed governor		Mechanical with TG3 / Electronic with TG2 with TG2	Electronic with TG2
Bore	mm	105	
Stroke	mm	127	
Electrical system (DC)	V	24	
Compression ratio		18,23:1	
Displacement (swept volume)	l	4.41	
Piston speed	m/s	6.35	7.62
Combustion system		Direct injection	
Charged air cooling system		Intercooled	
Maximum permissible load factor of PRP during 24h	%	80	
Lubrication system			
Type		PAROIL E (Mineral)	
Capacity of oil system (including filters + sump)	l	8	
Oil pressure at rated speed	kPa	430	
Maximum Lubrication oil temperature	°C	125	
Air intake system			
Air consumption 25°C (PRP)	m³/min	4.7	5.8
Air consumption 25°C (ESP)	m³/min	4.9	5.8
Max allowable air intake restriction	kPa	5	
Air filter cleaning efficiency	%	99.95%	
Air filter capacity	m³/min	6 - 12	
Cooling system			
Coolant		Parcool	
Capacity of engine	l	7	
Total capacity (radiator, hoses...)	l	16.5	
Fan power consumption at nominal speed	kW	2.6	2.8
Fan material		Plastic	
Coolant flow	l/s	1	1
Air mass flow	m³/s	2,5	3
	(53°C)	3	3,6
Fuel filter			
		Water Separator	
Max pressure	bar	2.06	
Temperature	°C	-40 to 121	
Volume	l	NA	
Flow Rate	l/h	341	
Emission compliance			
		EU STAGE 3A	
No X + HC	g/kWh	3.98	4.7
CO	g/kWh	0.89	5
PM	g/kWh	0.27	0.4
SO2	g/kWh	2 mg/kg	NA
CO2 (at optimal working point)	%	NA	NA

*These values are extracted from official engine datasheet.

4. Alternator

QAS 60 Pd S3A				
	rpm	1500		1800
General				
Manufacturer			Leroy Somer	
Model			LSA 42.3 L9	
Standard			IEC 34-1 / ISO 8528-3	
Rated net power (ESP: 50Hz 27°C / 60 Hz 40°C)	kVA	66		66
Number of bearings			1	
Number of wires			12	
Voltage regulator accuracy			+/- 0.5%	
Degree of protection / Insulation class			IP 23/H	
Environment Protection			System 2 (Humid atmosphere)	
Number of poles			4	
Number phases			3	
Over speed	rpm		2250	
Air flow	m³/s	0.1		0.1
Total Harmonic Distortion THD			no load < 2%-linear load < 4%	
Waveform: NEMA = TIF			< 50	
Xd Direct axis synchro reactance unsaturated	%	283		283
X'd Direct axis transient reactance saturated	%	14.7		14.7
X''d Direct axis subtransient reactance saturated	%	7.3		7.3
Excitation system				
			Shunt	
Sustained short-circuit current	%		180% (1,8x In)	
Time sustained short-circuit current	s		20	
AVR				
Model			R 220	
Sensing			1 phase	
Voltage regulation	%		±0.5	
Voltage sensing	V		≤140	

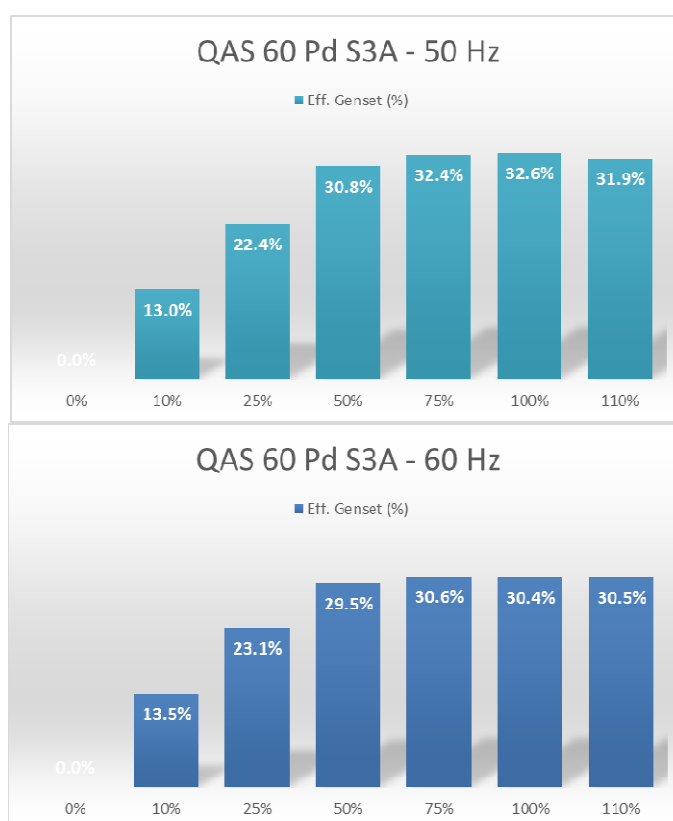
The Leroy Somer LSA alternators are designed for heavy duty continuous applications:

- System 2 protection (relative humidity >95%) for tropical environment (except coastal areas). With high performance dielectric varnish and reinforced over-coating on main stator and rotor
- 4 pole brushless design with single bearing, Class H insulation and IP23 rating
- Voltage regulation +/- 0.5%
- Full Load acceptance of prime power rating
- Standard excitation system is SHUNT (Self excited). As option (check *Electrical options*) you can have additional excitation system as:
 - PMG
 - Auxiliary winding

5. Generator

QAS 60 Pd S3A			
	rpm	1500	1800
Energy Balance			
Engine			
Heat rejection to exhaust	kW	52.2	62.9
Heat rejection to coolant	kW	47	62.9
Heat rejection to radiation	kW	9.1	10.3
Alternator			
Efficiency at full load	%	91.60%	91.00%

Genset Efficiency



Exhaust System			
Flow (PRP)	m ³ /min	11.5	13.5
Flow (ESP)	m ³ /min	12.5	14.7
Exhaust gas temperature "after turbine" (PRP)	°C	540	542
Exhaust gas temperature "after turbine" (ESP)	°C	560	598
Max. Backpressure (Without / with spark arrestor)	kPa	12 / TBD	15 / TBD
Output pipe diameter	mm		76.0
Battery			
Quantity			1
Voltage	V		12
Capacity	Ah		110
Connection			-
Dimensions (L x W x H)	mm		514x175x210

		QAS 60 Pd S3A	
	rpm	1500	1800
Cold cranking current	A(EN) / A(DIN)	800 / 450	
Starting power	kW	6	
Weight (wet)	kg	34.4	
Sensor			
Oil (temp, pressure & level)		STD	
Coolant (temp & level)		STD	
Fuel (feed pressure)		NA	
Charge air (temp & pressure)		NA	
Fuel Level		STD	
Water in Fuel (Switch)		STD	
Generator Voltage		STD	
Mains Voltage		OP	
Generator Current transformer		STD	
Transformer Maintenance Changeover feedback		NA	
Reply: Mains CB opened/closed		NA	
Reply: Generator CB opened/closed		NA	
Air Inlet Pressure Switch		NA	
Low Coolant Level Shutdown/Warning		NA	

*Confirm with Atlas Copco technical support.

6. Power Output

		QAS 60 Pd S3A	
	rpm	1500	1800
Circuit Breaker			
Brand		Schneider	
Model		CVS160B TM100G	
Poles		4	
Rated current (In)	A	100	
Thermal release, regulated (It)	A	87	
CB tripping point	A	86.6	86.6
Overload protection (I _r)	A	320	
Fault current protection, residual current release (I _{dn})	A	0,03-30	
Motor Driven DC voltage	V	NA	
Motorized		NA	
Life operating cycles without maintenance		20000	
Terminal Board			
Bolts diameter	mm	10	
Terminal type		Plug	
Sockets Available*			
Sockets 1 Phase			
PIN Domestic (1x) 2p + E 16 A/230 V		OP	
RIN Domestic (1x) 2p + E 16 A/230 V		OP	
CE Domestic (1x) 2p + E 16 A/230 V		OP	
Sockets 3 Phase			
		OP	
Configuration Remarks**		CEE form 3p + N + PE 16 A/400 V CEE form 3p + N + PE 32 A/400 V CEE form 3p + N + PE 63 A/400 V	

*Sockets are enable for 50Hz and disable for 60Hz

**For a different configuration/scope contact Atlas Copco support

STD – Standard; OP – Option; NA – Not Available

7. Options

QAS 60 Pd S3A			
	rpm	1500	1800
Mechanical Options			
Special Equipment			
Spark arrestor			OP
Material			S235 JR G2
Inlet shutdown valve			OP
Design pressure	bar		13
Max/Min Temperature	°C		-25 to 80

Spark arrestor is a device that is designed to trap any exhaust particles or combustible materials, such as sparks or other flaming debris, from escaping into hazardous areas where they might cause fires. Exhaust particles are centrifuged in the spark arrestor, then collected and stored in a reservoir until emptied by an operator. An air shut-off valve serves to stop the engine by closing the air intake once the controller detects an over speed in the engine.

Fuel System			
External fuel tank connection			OP
Material			Brass 0011 5204 03
Test pressure	bar		1
Overpressure	bar		2
Open pressure	bar		1±0,1
Max/Min Temperature	°C		-30 to +80
External fuel tank connection with quick coupling			OP

The EFT enable the generator to run for long periods of time on an external fuel supply without having to refuel. We can also provide quick couplings to enable easy and fast connection to the fuel tank

AFT Automatic fuel transfer			NA
Additional fuel filter			STD
Design pressure	bar		
Test pressure	bar		
Volume	l		
Max/Min Temperature	°C		
Max flow rate	g/h		
Skid fuel tank (long autonomy)			NA
Capacity	l		
Material			
Fuel level sender (*Changes automatically for different fuel tank)			STD
Oil level maintainer			NA
Capacity of oil tank			-
Cold start synthetic first oil filling			OP
Type			PAROIL Extra
Temperature (min / max)	°C		-15 to 40°C
Density (Ambient temperature)	g / cc		0,86 (15°C)
Cold flow			Antifreeze fuel additives in 0,2% composition

		QAS 60 Pd S3A	
	rpm	1500	1800
Mechanical Options			
Undercarriage option			
Undercarriage adjustable towbar with brakes		OP	
Number of axles		1	
Permissible mass on each axle	kg	1800	
Maximum speed	km/h	170	
Dimensions (L x W x H)	mm	4224 x 1700 x 2066	
Brake connections		Mechanical	
Wheel	r	14"	
Loose ball coupling		OP	
Adapter 24V road signalization		OP	
Towing eye			
Towing eye DIN		OP	
Towing eye NATO		OP	
Towing eye BALL coupling		OP	
Towing eye ITA		OP	
Towing eye AFR		OP	

Depending on the size, units have a two-wheeled, single axle trailer, or a double axel with 4 wheels. Both types of trailer have an adjustable towbar and road signalization.

Special options		
Special color undercarriage		OP
Special color wheels		NA
Special color canopy		OP
Special color frame		OP
Witness test		OP

Guided and face to face testing of the machine. Including Transient test and Heat Run Test.

Electrical Options

		QAS 60 Pd S3A
Coolant Heater		
Electric driven coolant heater		OP
Voltage	V	240
Power	kW	1
Current	A	4.2
Thermostat Range	°C	38 / 49
Fuel driven coolant heater		NA
Electrical power	W	
Rated voltage	V	
Operating pressure	bar	
Flow rate at 0,1 bar	l/h	

Its main mission is heat the coolant so that the temperature of the engine is always high enough to start straight away, even in temperatures as low as minus 25 degrees Celsius. Not for all models but a fuel powered version is available, which is ideal for remote areas without mains supply.

Frequency and Voltage configuration		
Frequency/Voltage/Phases	50 Hz / 400V / 3ph	STD
Dual frequency switch	50Hz-60Hz	OP
*If the unit is dual frequency, DV and MV versions are NA		
Dedicated frequency	50 Hz 230V 1ph	NA
Dual voltage	50 Hz 400 V 3ph - 230V 3ph (Norway)	OP
Dual voltage	50 Hz 400 3ph - 230V 1ph	OP

		QAS 60 Pd S3A	
		1500	1800
	rpm		
Electrical Options			
Battery			
Battery charger*		OP	
Temperature	°C	-20 to 70	
Input frequency	Hz	47.....63	
Output voltage	V	12	
Output current	A	5	
Output power	W	60	
Dimensions (L x W x H)	mm	147 x 123 x 86	
<i>Recommendable with Qc2103 and Qc4003</i>			
Battery cut off switch		OP	
Operations	V / A	28 / 1500	

Battery charger is necessary for stand-by applications because the controller is always on, ready to start at any time. Battery cut off switch allows the battery to be disconnected when storing the unit, thus preventing the battery from becoming drained.

Electronic speed regulator (Governor)		OP	
Model	Perkins LCS		
Connection to engine	RS - 232		
Sensors/Switch	°C and kPa	Lubrication and cooling system	

Earth Protection			
Neutral TNS	STD		
Neutral EDF (TT)	OP		
Neutral IT	OP		
Earth leakage detection Relay (ELR)	OP		
	mA	30	
Insulation Monitoring Relay	OP		
Earth PIN	STD		
Length	mm	650	

Alternator excitation system			
Permanent magnet (PMG)		OP	
AVR	R438		
Sustained short-circuit current	%	300% (3x In)	
Time sustained short-circuit current	s	10	
Operating temperature	°C	-20°C to +70°C	
No load voltage	V	125	125
Stator Phase/Phase resistance (20°C)	Ω	2.1	
Auxiliary winding		NA	
AVR			
Sustained short-circuit current	%		
Time sustained short-circuit current	s		

The PMG or Permanent Magnet Generator is a separate device to power the AVR and is ideal for motor starting and distorted loads as provides the generator 3 times its nominal current during 10 seconds. Auxiliary winding system is an extra winding layer in the alternator that provides same benefits than the PMG.

Controllers			
Qc1103	STD		
Qc2103	OP		
Qc4003*	NA		

*with Qc4003+ PMS Atlas Copco recommends: Battery charger + Coolant heater

*Just 1 ph socket available

*Qc4003 includes always communication cables and needed adaptors

Qc1103: is the controller dedicated for island operation or remote start

Qc2103: has in addition the possibility of detect a mains failure

Qc4003: is the high spec controller prepared to work synchronized with several units (IPP) and/or the mains

CONTROLLERS KEY FEATURES QC 1103 & 2103 CONTROLLERS

Auto start or automatic mains failure applications

Monitoring of electronic or non-electronic engines
J1939 as standard

Gen-set and busbar control & protection

Improved inputs/outputs
Up to 11 digital inputs, 5 analogue inputs and 8 relay outputs

Modbus communication rs485

Configurable for other applications
PARUS configurable

Graphical display
Multi-language



CONTROLLERS KEY FEATURES QC 4003 CONTROLLER

Controllers key features Qc 4003

Paralleling between generators and mains power supply

Full engine monitoring
CAN communication J1939

Gen-set and busbar control & protection

Multiple configurable inputs/outputs

Modbus communication RTU/RS485

Easy software with m-logic programation
PARUS 3

PARALLELING APPLICATIONS
Load Take Over, Mains Export/Import, AMF, Peak Shaving, Transformer Maintenance, Fix power and PMS (CAN)

